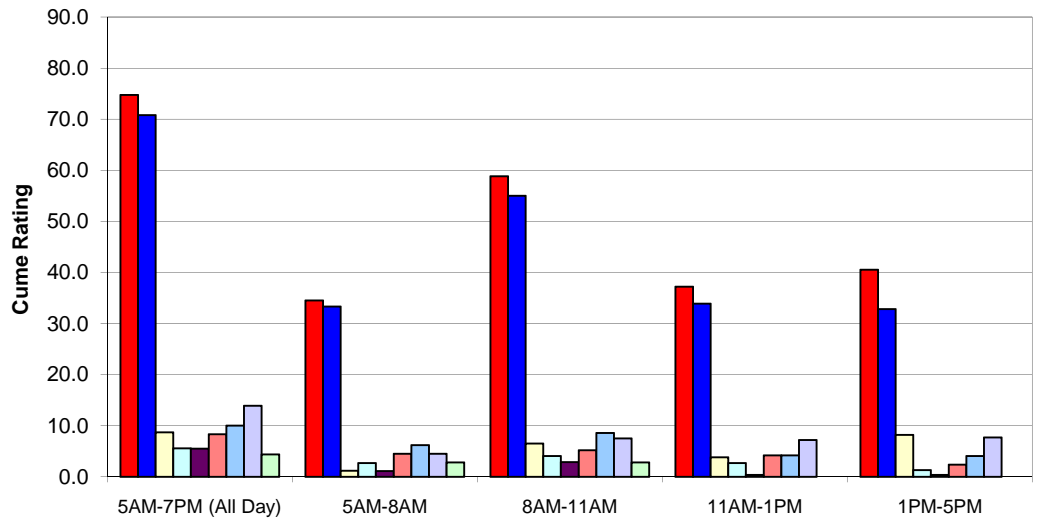




1007 Plum Creek Parkway  
 P.O. Box 880  
 Lexington, NE 68850-0880  
 Phone: (308) 324-2371  
 Fax: (308) 324-5786  
 E-mail: kravn@krvn.com  
 Web Site: www.kravn.com

## 2008 Agricultural Audience Data North Platte Trade Area

Commodity: **ALL SURVEYS**



■ KRVN AM/FM 
 ■ KRVN AM 
 ■ KRVN FM 
 ■ KCNI AM 
 ■ KIOD FM 
 ■ KOGA AM 
 ■ KOGA FM 
 ■ KXNP FM 
 ■ KZTL FM

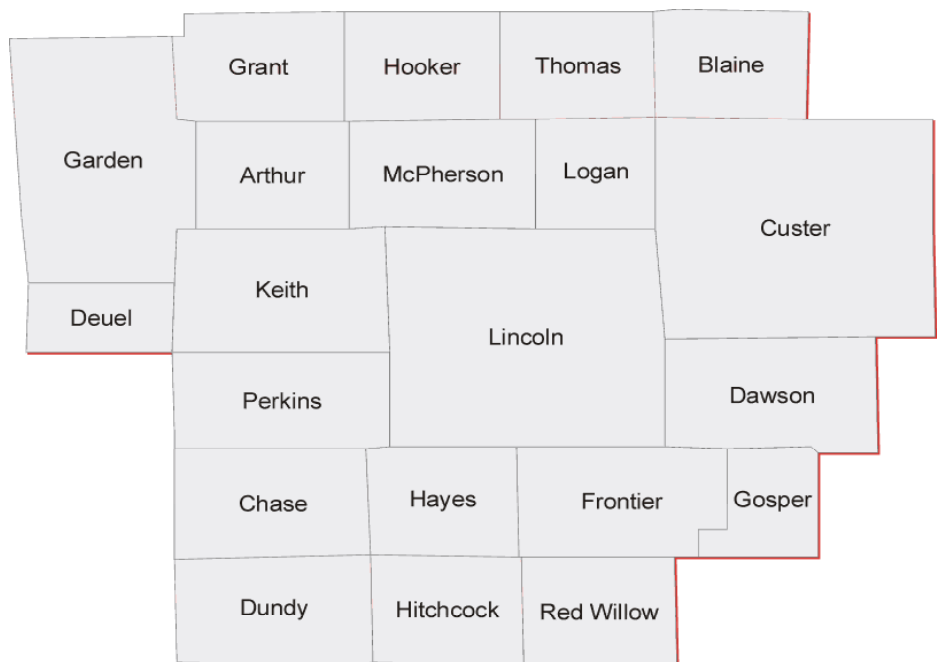
	5AM-7PM (All Day)		5AM-8AM		8AM-11AM		11AM-1PM		1PM-5PM	
	AQH	CUME	AQH	CUME	AQH	CUME	AQH	CUME	AQH	CUME
	SHR	RTG	SHR	RTG	SHR	RTG	SHR	RTG	SHR	RTG
<b>KRVN AM/FM</b>	<b>51.4</b>	<b>74.7</b>	<b>46.9</b>	<b>34.5</b>	<b>59.7</b>	<b>58.8</b>	<b>55.2</b>	<b>37.2</b>	<b>45.0</b>	<b>40.5</b>
KRVN AM	45.4	70.8	46.1	33.3	54.7	55.0	48.1	33.9	35.5	32.8
KRVN FM	6.1	8.7	0.8	1.2	5.0	6.5	7.1	3.8	9.6	8.2
KCNI AM	4.4	5.6	5.2	2.7	4.7	4.1	4.2	2.7	4.2	1.3
KIOD FM	0.8	5.5	0.9	1.1	1.7	2.9	0.1	0.4	0.1	0.4
KOGA AM	3.8	8.3	5.3	4.5	4.7	5.2	4.7	4.2	2.4	2.4
KOGA FM	9.4	10.0	18.5	6.2	8.4	8.6	6.6	4.2	7.0	4.1
KXNP FM	10.0	13.9	9.4	4.5	5.9	7.5	10.1	7.2	13.9	7.7
KZTL FM	1.8	4.4	7.1	2.8	1.5	2.8	0.0	0.0	0.0	0.0

**AMR DATA** is based on 161 surveys projected to a population of 3,693 farmers & ranchers in the North Platte Trade area. Stations not listed had less than 4.4% Cume Ratings. All data has been weighted by the number of farmers/ranchers in the surveyed counties.

**SURVEY METHOD** was by telephone interview of farmers/ranchers with \$50,000+ in annual sales of agricultural products. Surveys were conducted in Spring 2008 by Ag Media Research.

**AQH SHARE** is a station's Average Quarter Hour persons audience expressed as a percent of the farm radio listenership in the selected area (share of audience during an average quarter hour).

**CUME RATING** is a station's total farm audience expressed as a percent of the farm population in the selected area (share of population that tuned in at least once during the daypart).



**NEBRASKA** Arthur, Blaine, Chase, Custer, Dawson, Deuel, Dundy, Frontier, Garden, Gosper, Grant, Hayes, Hitchcock, Hooker, Keith, Lincoln, Logan, McPherson, Perkins, Red Willow, Thomas



**AG MEDIA RESEARCH**

© 2008 Ag Media Research